

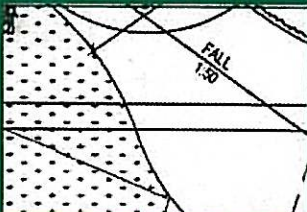
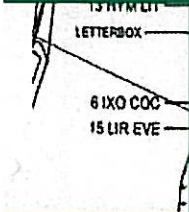
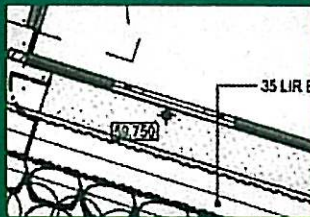
hortiQ

Trade magazine for specifiers, creators,
caretakers and growers of the lifestyle
horticulture industry in Queensland

Issue 1
Autumn 2008

Industry
Association:
News / Awards / Events

Plus:
Business
Communication
Sales
Marketing
Computers, IT & Web
Training & Education
Horticulture Features
Plant Focus



Supporter Groups:



North QLD Wines

Fruit wine was first produced commercially in Bundaberg in 1974.

Today Far North Queensland locations such as Mission Beach, Cooktown, Mareeba, Silkwood and Port Douglas have all added fruit wine to their list of attractions. Far North Queensland is one of ten wine regions to feature in the 2008 Queensland Wine and Food Map.

The wine map of Queensland is the most comprehensive wine map in Australia targeting wine tourists.

(source: Qld Gov Press Release 4/4/2008)



Your Partners In People.

AWX P/L

AWX HEADS TO THE COAST...and it is not to go surfing!!

AWX, the industry's partner in people, have now established on both the Gold and Sunshine Coasts.

It is exciting and busy times for the respective long term AWX managers (Pat Reardon and John Hallo) who have also been tasked with promoting and supporting the new AWX Contract Planting division.

Both managers have commented that with the push to source, retain and train skilled personnel within the managed labour pool that is available to AWX clients, is certainly making life exciting! Contact on: (07) 3238 0800



Aloe-Aloe

The hottest item in the industry now for the nursery and landscaper are the new superior ornamental hybrid range of aloes. The hybrid vigour has produced plants with vibrant flower colours, improved sculptural attributes and better suited to climate change situation.

First release hybrids are TOPAZ (a standout for landscapers), ARIES, GEMINI and FAIRY PINK (a favourite for home gardeners).

For more details and a brochure, contact Aloe-Aloe Horticulture on 0419 476 408 or www.aloe-aloe.com.au



Stockade Nursery

Stockade Nursery is proud to announce the release of Octopus Agave (*Agave vilmoriniana*). Highly attractive with graceful arching leaves that carry no spines is popular with landscaper designers in Sydney and USA. Growing to only 1m tall and 1.5m wide.

You can source this plant by phoning (07) 5495 8546 or www.stockadenursery.com.au

News on Climate

A new report on the state of the environment in Queensland identifies climate change as the next challenge facing our environment.

The potential impacts of climate change on Queensland's natural environment presents challenges for the state's biodiversity, lifestyle and economy.

Among the key findings of the report are:

- the ecological footprint – a measure of sustainable consumption – for the average Queenslanders is nearly three and a half times higher than the world average;
- the state's average temperature increased by one degree Celsius between 1910 and 2006;
- in the five years to March 2007, nearly all of Queensland received below average or well below average rainfall;
- agriculture is the major user of surface water in Queensland, currently standing at 67 percent of the total water used;
- almost half the flora and fauna species living in Queensland aren't found anywhere else in the world;
- there are more native plants and animals living in Queensland than any other state of Australia;
- there has been a reduction in the number of presumed extinct flora species with the rediscovery of two species previously thought to be extinct;
- there was a 26 percent decline from 1997 to 2005 in the koala population in the south-east Queensland Koala Coast due to urban expansion;
- invasive weeds cost Queensland an estimated \$600 million a year in lost primary production and control.

(source: Qld Gov Press Release 12/4/2008)